

General Specifications

Drip Ring Specification Type PFR

Application

Drip Rings (sometimes known as Flushing Rings) are commonly used in applications where Plugging may occur or where in-situ calibration is required without removing the instrument from the process.

Configuration

Drip Rings can be supplied with either 1 or 2 ports.
Drip Rings are fitted between Flange seals and flanged process connections.

Process Connection

ASME in all ratings
ASME RJT in all ratings
DIN in all ratings from PN 10
JIS in all ratings from 10K
Table in all ratings from E
Others available upon request.

Port Connections

1/4" NPT
1/2" NPT
3/4" NPT

Construction

Machined out of bar stock.

Wetted Materials

316/316L Dual Certified Stainless Steel (standard)
Other materials available upon request.

Process Temperature Limits

Refer to Flange rating.

Dimensional Drawings

Refer to Dimensional Drawings.

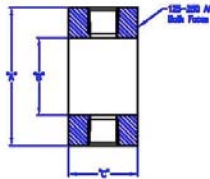


General Specifications

Drip Ring – Type PFR		Suffix Code
Process Connection	Direct Adaptor	DA
Connection Type	ASME Raised Face	AR
	ASME Flat Face	AF
	ASME Large Groove	AG
	ASME Large Tongue	AT
	ASME RTJ	RT
	DIN	DIN
	JIS (B2220)	JIS
	Table (EN1092)	TAB
	Special	XXX
Connection Size	DN25 (1")	08
	DN50 (2")	16
	DN80 (3")	24
	DN100 (4")	32
	Special	XX
Connection Rating	ASME 150lb, Table E	1
	ASME 300lb, DIN PN10-16, JIS 10K, Table F	2
	ASME 600lb, DIN PN25-40, JIS 16K, Table H	3
	ASME 900lb, DIN PN64, JIS20K Table J (ASME 900lb for DN80 (3") & above)	4
	ASME 1500lb, DIN PN100, JIS 30K, Table K	5
	ASME 2500lb, DIN PN160, JIS 63K	6
Wetted Material	316/316L Dual Certified Stainless Steel	S
	304 Stainless Steel	A
	Hastelloy C276	H
	Monel 400	M
	Titanium Grade 2	I
	Special	X
Flushing Ports	1 x 1/4" NPT	1
	2 x 1/4" NPT	2
	1 x 1/2" NPT	3
	2 x 1/2" NPT	4
	1 x 3/4" NPT	5
	2 x 3/4" NPT	6

Model PFR Flushing Ring

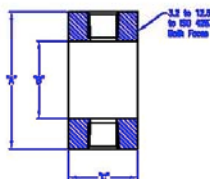
Model FRAR
to ASME B16.5:2003



1/4" & 1/2" Ports				
Size	Rolling	"a"	"b"	"c"
1"	Ø150-Ø600	51.0	25.0	30.0
	Ø900-Ø2500			40.0
2"	Ø150-Ø600	82.1	82.0	30.0
	Ø900-Ø2500			40.0
3"	Ø150-Ø600	127.0	90.0	30.0
	Ø900-Ø2500			40.0
4"	Ø150-Ø600	157.2	115.0	30.0
	Ø900-Ø2500			40.0

3/4" Ports				
Size	Rolling	"a"	"b"	"c"
2"	Ø150-Ø600	92.1	82.0	40.0
	Ø900-Ø2500			50.0
3"	Ø150-Ø600	127.0	90.0	40.0
	Ø900-Ø2500			50.0
4"	Ø150-Ø600	157.2	114.3	40.0
	Ø900-Ø2500			50.0

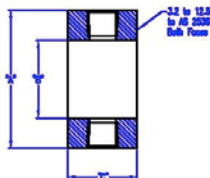
Model FRDN
to BS EN 1092-1:2007



1/4" & 1/2" Ports				
Size	Rolling	"a"	"b"	"c"
DN25	PN10-Ø3	45.0	25.0	30.0
	PN100-160			40.0
DN50	PN10-Ø3	102.0	80.0	30.0
	PN100-160			40.0
DN80	PN10-Ø3	138.0	90.0	30.0
	PN100-160			40.0
DN100	PN10-16	168.0	110.0	30.0
	PN63	162.0	110.0	40.0

3/4" Ports				
Size	Rolling	"a"	"b"	"c"
DN50	PN10-Ø3	102.0	80.0	50.0
	PN100-160			50.0
DN80	PN10-Ø3	138.0	90.0	50.0
	PN100-160			50.0
DN100	PN63	162.0	110.0	50.0
	PN100-160			50.0

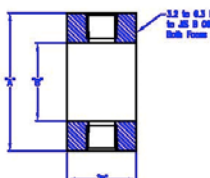
Model FRTB
to AS 2129:2000



1/4" & 1/2" Ports				
Size	Rolling	"a"	"b"	"c"
DN25	Table E-F	83.0	25.0	30.0
	Table H-J	84.0		
	Table K-R	78.0		
DN50	Table E	90.0	80.0	30.0
	Table F	103.0		
	Table H-R	102.0		
DN80	Table E	122.0	90.0	30.0
	Table F	141.0		
	Table H-R	127.0		
DN100	Table E	154.0	110.0	40.0
	Table F	167.0		
	Table H-R	152.0		

3/4" Ports				
Size	Rolling	"a"	"b"	"c"
DN50	Table E	90.0	80.0	40.0
	Table F	103.0		
	Table H-R	102.0		
DN80	Table E	122.0	90.0	40.0
	Table F	141.0		
	Table H-R	127.0		
DN100	Table E	154.0	110.0	50.0
	Table F	167.0		
	Table H-R	152.0		

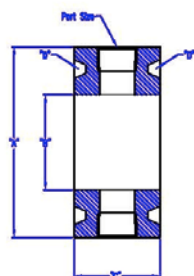
Model FRJ
to JIS B 2220:2004



1/4" & 1/2" Ports				
Size	Rolling	"a"	"b"	"c"
DN25	5K	50.0	25.0	30.0
	10K-20K	67.0		
	30K	70.0		
DN50	5K	85.0	85.0	30.0
	10K-20K	96.0		
	30K	105.0		
DN80	5K	121.0	90.0	30.0
	10K	128.0		
	16K-20K	132.0		
DN100	5K	140.0	115.0	40.0
	10K	141.0		
	16K-20K	151.0		

3/4" Ports				
Size	Rolling	"a"	"b"	"c"
DN50	5K	85.0	85.0	40.0
	10K-20K	96.0		
	30K	105.0		
DN80	5K	121.0	90.0	50.0
	10K	128.0		
	16K-20K	132.0		
DN100	5K	141.0	115.0	50.0
	10K	151.0		
	16K-20K	160.0		

Model FRRT
to ASME B16.5:2003



1/4" & 1/2" Ports					
Size	Rolling	"a"	"b"	"c"	"d"
1"	Ø150	83.5	33.0	46.0	R15
	Ø300/Ø600	70.0			R18
	Ø900/Ø1500	71.5			R18
	Ø2500	82.5			R18
2"	Ø150	102.0	82.0	46.0	R22
	Ø300	108.0			R23
	Ø600	108.0			R23
	Ø900/Ø1500	124.0			R24
	Ø2500	127.0			R26
	Ø150	134.0			R29
3"	Ø300	146.0	92.0	50.0	R31*
	Ø600	146.0			R31*
	Ø900	158.0			R31
	Ø1500	168.0			R35
	Ø2500	168.0			R32
	Ø150	172.0			R36
4"	Ø300	175.0	115.0	90.0	R37
	Ø600	175.0			R37
	Ø900	181.0			R37
	Ø1500	194.0			R39
	Ø2500	203.0			R38
	Ø150	172.0			R36

3/4" Ports					
Size	Rolling	"a"	"b"	"c"	"d"
2"	Ø150	102.0	62.0	56.0	R22
	Ø300	108.0			R23
	Ø600	108.0			R23
	Ø900/Ø1500	124.0			R24
	Ø2500	127.0			R26
	Ø150	134.0			R29
3"	Ø300	146.0	92.0	60.0	R31*
	Ø600	146.0			R31*
	Ø900	158.0			R31
	Ø1500	168.0			R35
	Ø2500	168.0			R32
	Ø150	172.0			R36
4"	Ø300	175.0	115.0	70.0	R37
	Ø600	175.0			R37
	Ø900	181.0			R37
	Ø1500	194.0			R39
	Ø2500	203.0			R38
	Ø150	172.0			R36

* For ring joints with lapped flanges
Ø300 & Ø600 use Ring/Groove No. 30 instead of 31