

Silo Seal Type PSSW

Application.

The Benney Silo Seal was developed to provide a sanitary connection in storage vessels. After installation the diaphragm is flush with the inner vessel wall. An O Ring at the process face thus eliminating dead space or pockets where bacteria can grow or CIP liquids can accumulate joins the spud and the seal. This seal is designed to integrate with spray ball cleaning and automated clean in place systems (CIP). The Silo seal is particularly suitable for installation in the bottom of a vessel where other process connections would leave a cavity or dead space.

The silo seal consists of two basic components, the outer spud or weldment and the inner removable silo diaphragm seal. Cutting a hole in the vessel wall and welding the spud in the desired location achieve installation. Slide transmitter complete with the silo diaphragm seal into the spud, and tighten the nut or clamp. The diaphragm is flush with the tank wall, thus eliminating dead space or pockets making this seal ideal for spray ball cleaning and CIP.



Configuration.

The silo seal consists of two basic components, the outer spud or weldment and the inner removable silo diaphragm seal. Installation is achieved by cutting a hole in the vessel wall and welding the spud in the desired location. The diaphragm seal is slid into the spud and fastened using either a clamp or nut. A sanitary o-ring seal is made at the inner wall surface.

This seal is only available in transmitter specification.

Process Connection.

- 3" Nut Silo Seal
- 3" Nut Silo Seal (Heavy Duty)
- 3" Clamped Silo Seal

Seal Construction.

Machined out of barstock with diaphragm welded directly into seal body.

Diaphragm Materials.

- 316L stainless steel (Standard)
- Other materials available upon request.

Body and Weldment Material.

316L stainless steel.

Maximum Pressure.

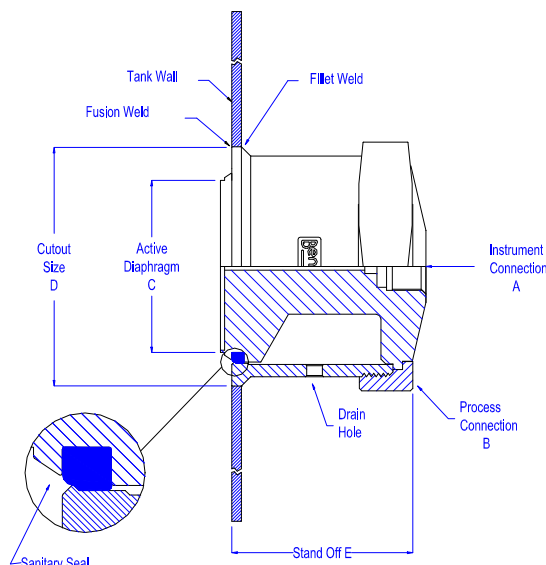
1500kPa.

Instrument Connection.

½" BSPP female - only

Zero Stability.

Stability will be affected by the instrument configuration, ambient temperature, process temperature, connection size (diaphragm size) and the measuring range. For temperature effects and instrument accuracy please contact us.



Standard seal configuration.

Size	"A"	"B"	"C"	"D"	"E"
3"	½" BSPP	Nut	72	100	75
3"	½" BSPP	Nut Heavy Duty	72	140	75
3"	½" BSPP	Clamped	72	120	60

*All dimensions are in millimetres.