

# Sanitary Direct Mount Adaptors

## Type SA

**Application**

Ideally suited to the food and beverage manufacturing industries, for control of very low-level pressure ranges, and where process temperatures vary. By using the temperature compensation of the **Transmitter capsule diaphragm**, levels as low as 100mm H<sub>2</sub>O can be controlled even when the process temperature is fluctuating dramatically. Adding cold ingredients to a hot batch of product or visa versa could cause this temperature change. The adaptor is suitable for use where spray ball cleaning of process vessels is used. The adaptor has no crevices for bacteria to lodge and grow.

**Configuration**

For D.P transmitters only. The adaptor is mounted directly to the high side of the transmitter capsule. A special gasket fits between the adaptor and capsule to give a sanitary seal. There is no filled system and no special tools or technology required for service. The transmitter specifications remain unchanged.

**Process Connection**

1 ½", 2" & 3" Triclover  
 1 ½", 2" & 3" BSM (British Standard Milk)

½", ¾", 1", 1 ½" & 2" Female Thread Adaptors (Non Sanitary)

**Construction**

Machined out of bar stock.

**Wetted Materials**

316/316L Dual Certified Stainless Steel (standard) and the diaphragm material of the transmitter. Other materials available upon request.

**Ambient Temperature Limits**

Per transmitter specifications.

**Process Temperature Limits**

Per transmitter specifications.

**Accuracy.**

Per transmitter specifications.



# General Specifications



## How to Order - Type SA

### **Model Type**

SA = Sanitary Adaptor

### **Process Connection**

TRI = Triclover

BRM = BSM Recess Face (RJT) Male

BRF = BSM Recess Face (RJT) Female

BFM = BSM Flat Face Male

BFF = BSM Flat Face Female

FTF = BSPT female Tapered Thread Adaptor **Note: Non sanitary**

FNF = NPT female Tapered Thread Adaptor **Note: Non sanitary**

XXX = Special

### **Connection Size**

04 = ½" **Note: Only available for Threaded Process Connection**

06 = ¾" **Note: Only available for Threaded Process Connection**

08 = 1" **Note: Only available for Threaded Process Connection**

12 = 1 ½" **Note: BSM & Triclover connections only available for EJX Transmitters**

16 = 2"

24 = 3"

XX = Special

### **Wetted Material**

S = 316/316L Dual Certified Stainless Steel

X = Special

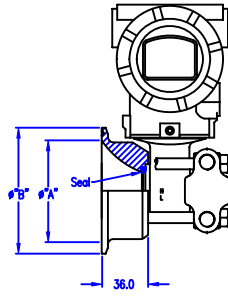
### **Transmitter Model**

EJX = EJX 110A/430A

EJA = EJA 110A/430A

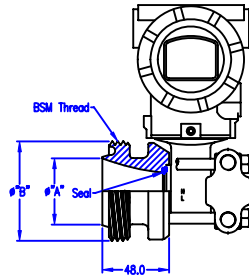


Model SA  
Direct Mount Adaptors



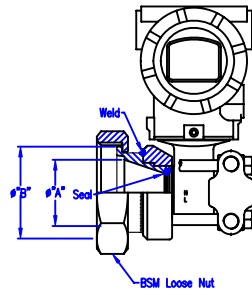
TRI – Triclover adaptors

Model Size	"A"	"B"
1-1/2"	35.0	51.2
2"	47.6	63.5
3"	73.0	83.5



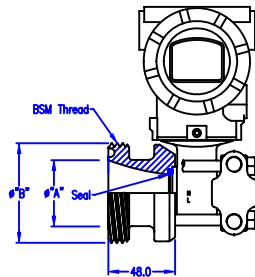
BRM – BSM Recessed Face (RJ) Male Adaptors

Model Size	"A"	"B"
1-1/2"	35.0	58.3
2"	47.6	72.0
3"	73.0	97.5



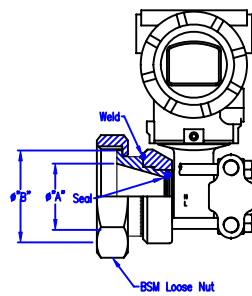
BRF – BSM Recessed Face (RJ) Female Adaptors

Model Size	"A"	"B"
1-1/2"	35.0	55.0
2"	47.6	66.7
3"	73.0	92.1



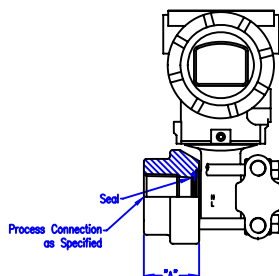
BFM – BSM Flat Face Male Adaptors

Model Size	"A"	"B"
1-1/2"	35.0	58.3
2"	47.6	72.0
3"	73.0	97.5



BFF – BSM Flat Face Female Adaptors

Model Size	"A"	"B"
1-1/2"	35.0	55.0
2"	47.6	66.7
3"	73.0	92.1



FTF & FNF – Female Tapered Thread Adaptors

Model Size	"A"
1/2"	40.0
3/4"	40.0
1"	40.0
1-1/2"	60.0
2"	60.0