

General Specifications

Sanitary Pipe Connection Seals

Specification Type SP/3P

Application

Primarily used in Food, Beverage and Pharmaceutical Industries for measuring pressure, level and flow. The Sanitary connection fitting is designed for Clean In Place (CIP) applications.

Configuration

Differential or Gauge pressure. In all cases a Low Volume cover flange must be fitted to all DP type transmitters to reduce fill quantity and therefore reduce errors induced by ambient temperature change. Gauge pressure transmitters require a G1/2" process connection.

Process Connection and Sizes

Triclover, BSM (British standard Milk), DIN (EN1092), JIS (B2220), SMS (Swedish Milk Standard) & IDF (International Dairy Federation) available in DN40 (1-1/2"), DN50 (2"), DN65 (2-1/2") & DN80 (3")

Seal Construction

Machined from bar stock.
Diaphragm welded into housing.

Wetted Materials

316/316L Dual Certified Stainless Steel (standard)
Electro-polishing available on request.
Other materials available upon request.

Capillary

Available in 1 to 5 metre lengths for DN 40 (1-1/2"), 1 to 10 metre lengths for 2" and above. Capillaries must be of matching lengths for differential systems.

Capillary Armour

Spiral wound 304 Stainless Steel (standard)

Zero Stability

Stability will be affected by the instrument configuration, ambient temperature, process temperature, connection size (diaphragm size) and the measuring range.
Please contact to discuss temperature effects and instrument accuracy.

Dimensional Drawings & System Configuration

Refer to Dimensional Drawings.



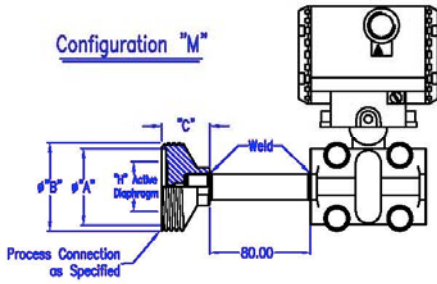
General Specifications

Sanitary Pipe Connection Seals – Type SP/3P		Suffix Code
Process Connection	Sanitary Pipe	SP
	Sanitary Pipe with 3-A approval	3P
Connection Type	Triclover	TRI
	BSM Recess Face (RJT) Male	BRM
	BSM Recess Face (RJT) Female	BRF
	BSM Flat Face Male	BFM
	BSM Flat Face Female	BFF
	SMS Male	SMM
	SMS Female	SMF
	IDF Male	IDM
	IDF Female	IDF
Special	XXX	
Connection Size	DN40 (1-1/2")	12
	DN50 (2")	16
	DN65 (2-1/2")	20
	DN80 (3")	24
	Special	XX
Wetted Material	316/316L Dual Certified Stainless Steel	S
	Special	X
System Configuration	Gauge Pressure System with G-1/2" Connection Direct Mounted TX	G
	Gauge Pressure System with G-1/2" Connection Capillary mounted TX	S
	Gauge Pressure System with DP Type TX Direct Mounted	M
	Gauge pressure System with DP Type TX Capillary Mounted	P
	Differential Pressure System with Capillary	D
Capillary / Standoff	Standoff (System Configuration "M") / Heat Neck (System Configuration "G")	AA
	None Note: Only available with System Configuration "G"	00
	1 Metre	01
	2 Metres	02
	3 Metres	03
	4 Metres	04
	5 Metres	05
	6 Metres	06
	7 Metres	07
	8 Metres	08
	9 Metres	09
10 Metres	10	
Fill Liquid	KN32 704 Silicon Oil 30cs (-10°C to +300°C)	A
	KN22 Silicon Oil 100cs (-40°C to +290°C)	B
	KN33 705 Silicon Oil 320cs (-10°C to +400°C)	C
	KN59 Neobee 10.1cs (FDA app) (-20°C to +160°C for less than 0Bar. -20°C to +204°C for greater than 0Bar)	F
	Vegetable Oil (Food Grade) (10°C to +100°C)	V
	KN17 Silicon Oil 2cs (-90°C to +80°C for less than 1Bar. -90°C to +180°C for greater than 1Bar)	L
	Special	X

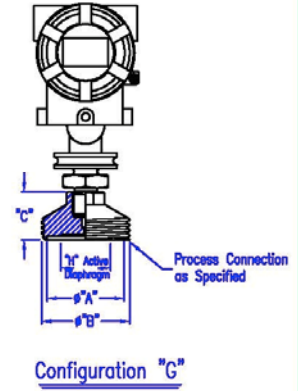
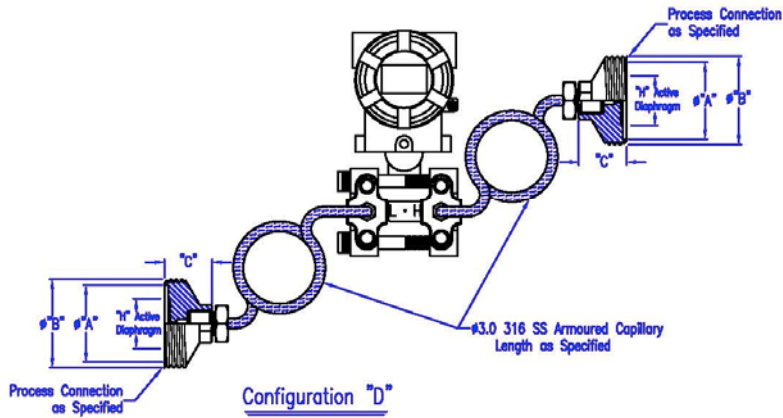
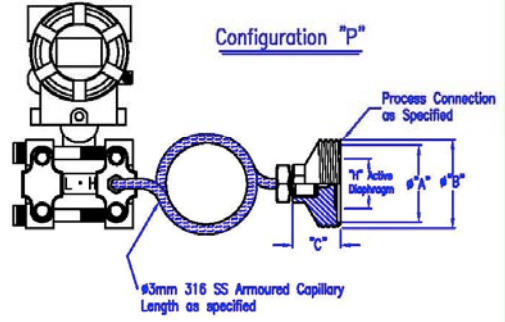
Model SPSMM

SMS Male

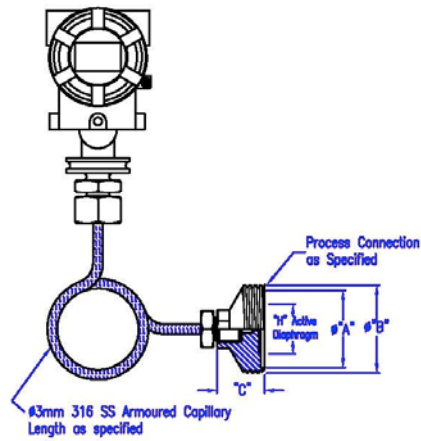
Configuration "M"



Configuration "P"



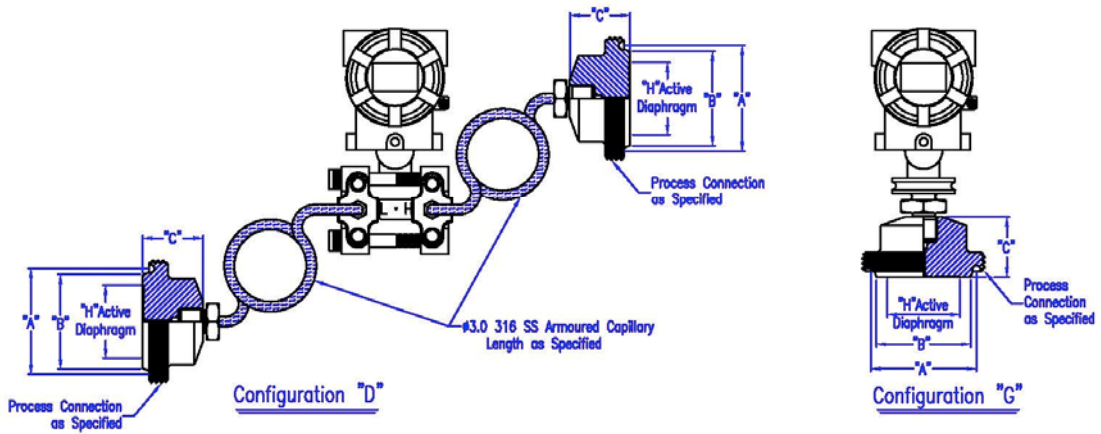
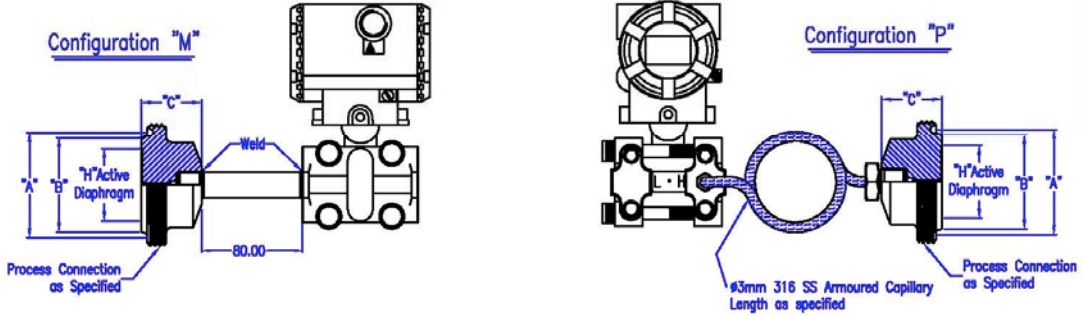
Process Connection	"A"	"B"	"C"	"I"
1-1/2"	48.0	Rd60.0 x 6 TPI	38.0	32.0
2"	61.0	Rd70.0 x 6 TPI	38.0	40.0
Special	TBA	TBA	TBA	TBA



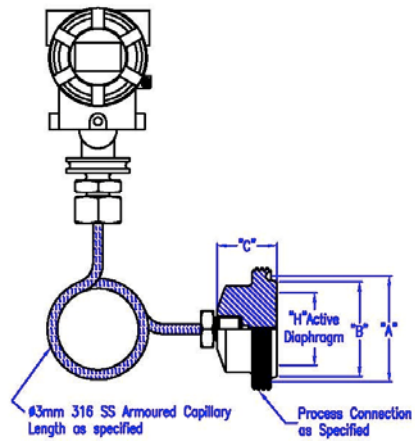
Configuration "S"

Model SPBRM

BSM Recessed Male



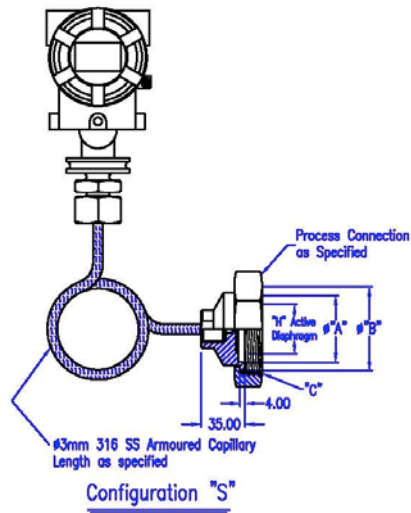
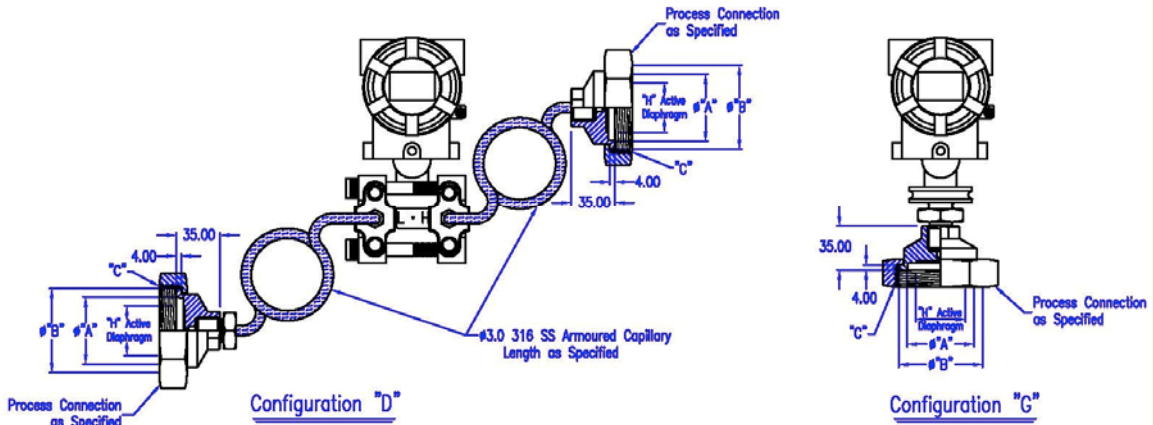
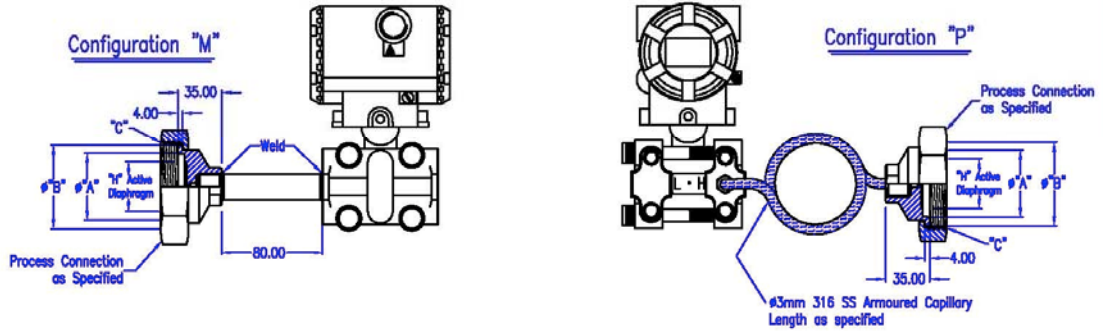
Process Connection	"A"	"B"	"C"	"H"
1-1/2"	48.0	38.0	35.0	32.0
2"	58.7	50.0	45.0	45.0
2-1/2"	71.4	62.0	50.0	59.0
3"	84.1	75.0	50.0	59.0
Special	TBA	TBA	TBA	TBA



Configuration "S"

Model SPBRF

BSM Recessed Female

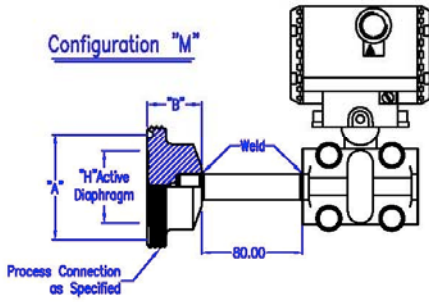


Process Connection	"A"	"B"	"C"	"H"	A/F Hex
1-1/2"	39.2	54.0	ø55.0 x 6TPI BSW	32.0	65.0
2"	53.2	66.7	ø67.8 x 6TPI BSW	40.0	79.0
2-1/2"	65.2	79.4	ø80.5 x 6TPI BSW	52.0	92.0
3"	78.2	92.1	ø93.2 x 6TPI BSW	72.0	105.0
Special	TBA	TBA	TBA	TBA	TBA

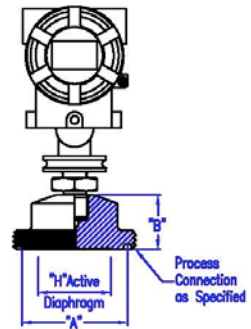
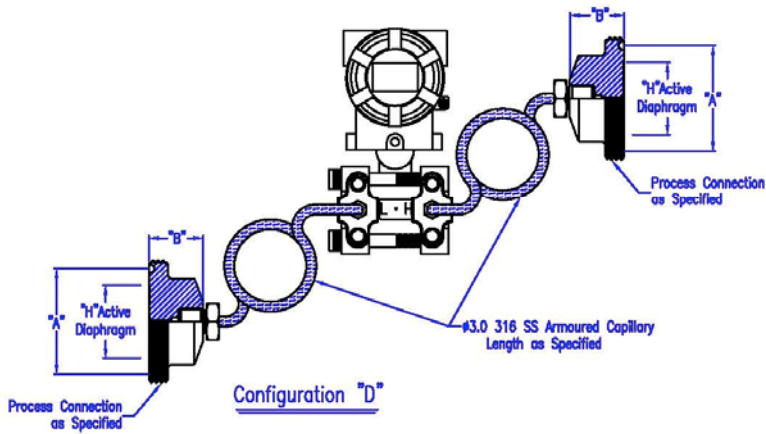
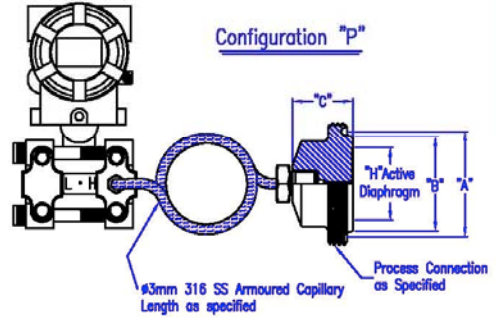
Model SPBFM

BSM Flat Faced Male

Configuration "M"

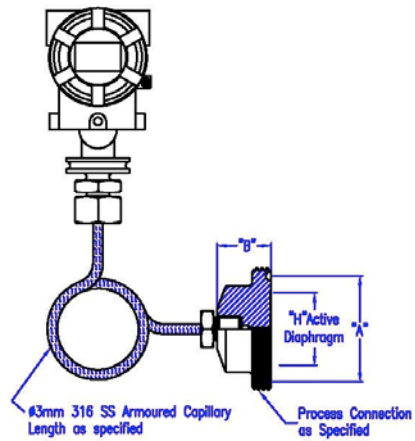


Configuration "P"



Configuration "G"

Process Connection	"A"	"B"	"H"
1-1/2"	48.0	35.0	32.0
2"	58.7	45.0	45.0
2-1/2"	71.4	50.0	59.0
3"	84.1	50.0	59.0
Special	TBA	TBA	TBA

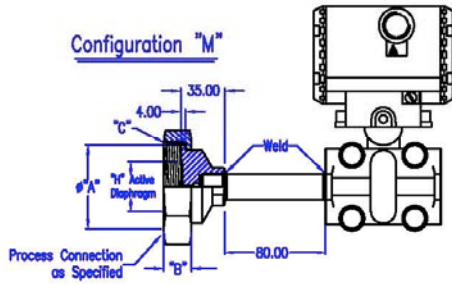


Configuration "S"

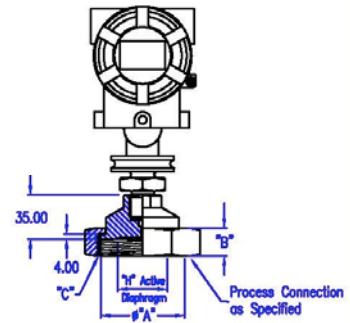
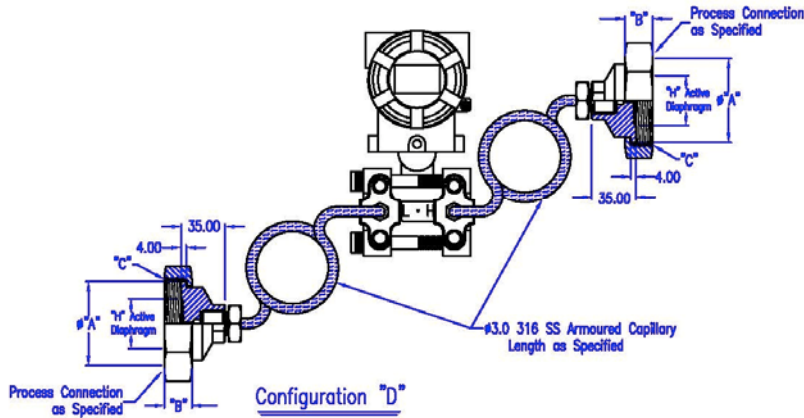
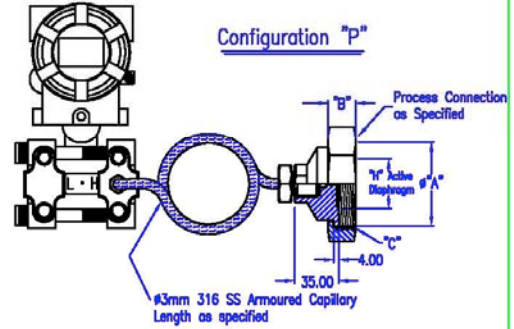
Model SPBFF

BSM Flat Faced Female

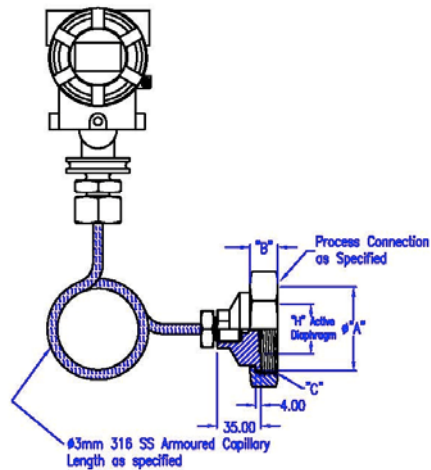
Configuration "M"



Configuration "P"



Configuration "G"



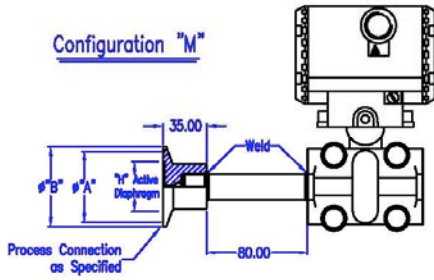
Configuration "S"

Process Connection	"A"	"B"	"C"	"H"	A/F Hex
1-1/2"	54.0	22.0	#55.0 x 6TPI BSW	32.0	65.0
2"	66.7	22.0	#67.8 x 6TPI BSW	40.0	79.0
2-1/2"	79.4	22.0	#80.5 x 6TPI BSW	52.0	92.0
3"	92.1	22.0	#93.2 x 6TPI BSW	72.0	105.0
Special	TBA	TBA	TBA	TBA	TBA

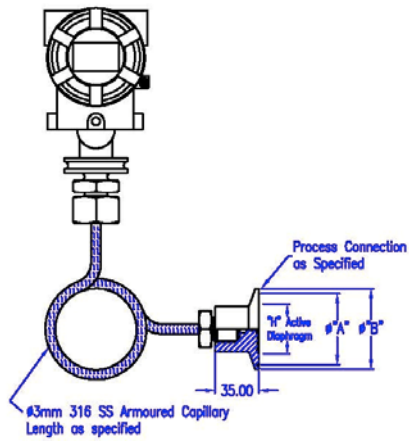
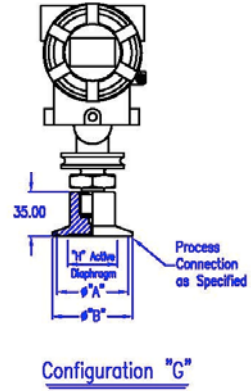
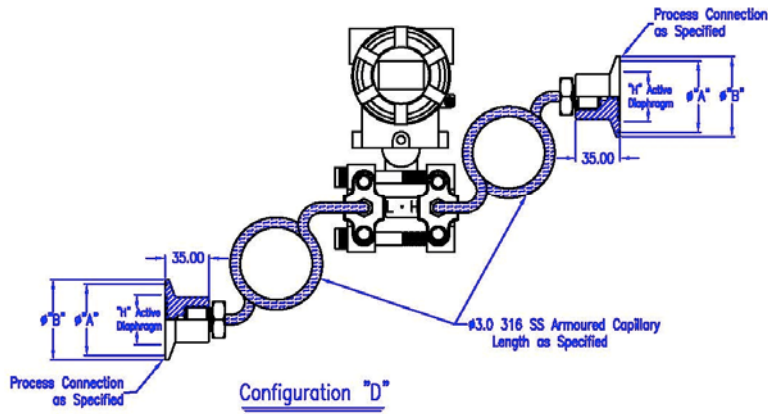
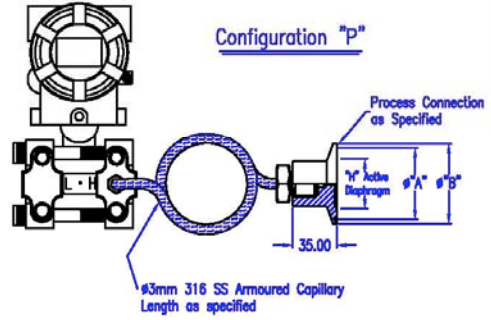
Model SPTRI

Triclover

Configuration "M"



Configuration "P"



Process Connection	"A"	"B"	"1"
1-1/2"	43.5	51.0	32.0
2"	56.5	63.5	40.0
2-1/2"	70.5	77.65	52.0
3"	83.5	91.3	72.0
Special	TBA	TBA	TBA

Configuration "S"